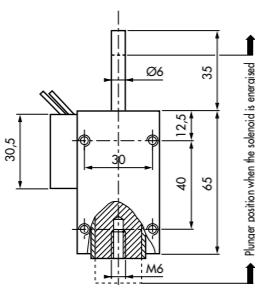
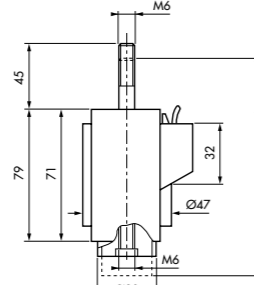




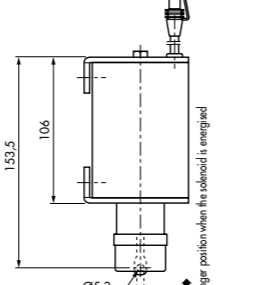
8.21



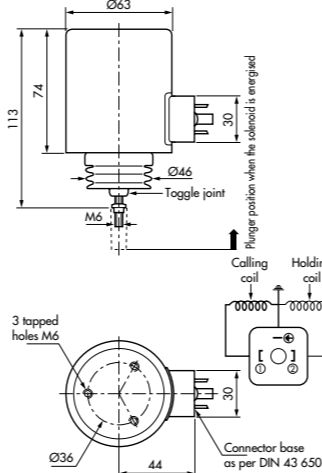
8.23



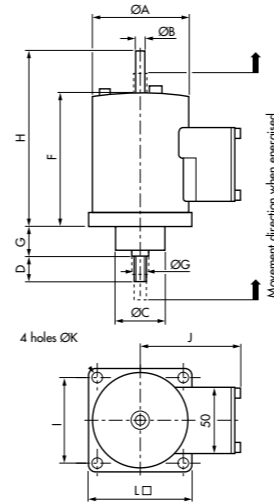
8.P27



8.25 Diesel



8.25



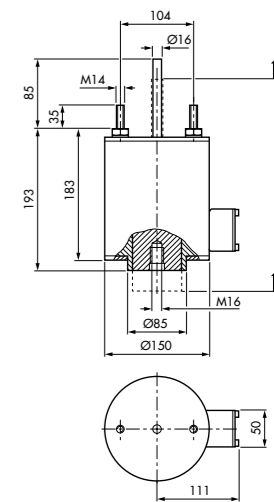
8.28



8.31

8.34

8.36



Shown in energised position

For a more detailed drawing please request the specifications sheet of the product

Part number	8.21.02.25	8.23.80.64	8.P27.40.02	C.8.25W.AJ.78
Nominal stroke	20 mm	15 mm	22 mm	25 mm
Absorbed power (W)	18 70 330	23 85 400	55	Calling 600W Holding 22W
Force at beginning of stroke (N)	10 25 50	18 46 115	30	60
Force at end of stroke (N)	22 47 85	80 170 290	100	70
Duty cycle	100 % 25 % 5 %	100 % 25 % 5 %	100%	100 %
Total length of cycle	2 mn 2 mn	2 mn 2 mn		Holding
Standard voltage	24 Vdc	24 Vdc	12 Vdc	12 Vdc - 24 Vdc
Type	Push-Pull	Push or Pull	Pull	Pull
Incorporated return spring	no	yes	no	yes
Plunger retainer	no	no	yes	no
Total weight	700 g	1,1 kg	3,3 kg	1,8 kg
Plunger weight	100 g	0,25 kg	0,40 kg	0,25 kg
Protection rating	IP00	IP40	IP43	IP 43

Possible variants (please call us to define the part numbers)  
Detailed technical specification sheets available on request

	End fixing	Without spring Smooth rod	Push-Pull Without spring Without toggle joint
Stroke (mm)	15	5 8 25	
Duty cycle 100%			
Force at beginning of stroke (N)	5	20 18 10	
Force at end of stroke (N)	50	400 120 40	
Duty cycle 5%			
Force at beginning of stroke (N)	43	200 195 85	
Force at end of stroke (N)	125	760 280 160	
Supply voltage	12 to 220 Vdc 24 to 230 Vac	12 to 220 Vdc 24 to 230 Vac	24 Vdc 12 to 220 Vdc
Connection	Tags 6,35 mm	Tags 6,35 mm	

Important: for all orders, please specify: part number-voltage-duty cycle.

	8.25	8.28	8.31	8.34		8.25	8.28	8.31	8.34
A	Ø63	Ø75	Ø90	Ø110	G	34,5	39	49	58
B	Ø6	Ø8	Ø10	Ø10	H	132,5	150,5	182	214
C	Ø34	Ø42	Ø48	Ø64	I	54	64	78	93
D	20	20	24	24	J	67	74	81,5	91,5
E	M10	M10	M12	M12	K	Ø5,5	Ø6,5	Ø8,5	Ø8,5
F	89	100,5	117	137	L	65	77	94	114

	B8.25.33.05 (d. c.) D8.25.33.05 (a. c.)	B8.28.33.05 (d. c.) D8.28.33.05 (a. c.)	B8.31.33.05 (d. c.) D8.31.33.05 (a. c.)	B8.34.33.05 (d. c.) D8.34.33.05 (a. c.)	B8.36.01.05 (d. c.) D8.36.01.05 (a. c.)
	30 mm	34 mm	40 mm	50 mm	60 mm
	32 115 550	48 160 750	55 190 900	75 260 1250	120 460 2200
	10 35 90	30 75 170	35 100 240	70 170 450	130 360 750
	50 85 125	90 150 340	180 340 650	550 950 1400	1250 1500 2000
	100% 25% 5%	100% 25% 5%	100% 25% 5%	100% 25% 5%	100% 25% 5%
	2mn 2mn	5mn 5mn	5mn 5mn	5mn 5mn	5mn 5mn
	24 Vdc - 230 Vac	24 Vdc - 230 Vac	24 Vdc - 230 Vac	24 Vdc - 230 Vac	24 Vdc - 230 Vac
	Push-Pull	Push-Pull	Push-Pull	Push-Pull	Push-Pull
	no	no	no	no	no
	yes	yes	yes	yes	no
	1,8 kg	2,9 kg	4,9 kg	8 kg	21,5 kg
	0,2 kg	0,4 kg	0,7 kg	1,7 kg	5 kg
	IP40	IP40	IP40	IP40	IP40

Possible variants (please call us to define the part numbers)  
Detailed technical specification sheets available on request

	Push Pull	Push Pull	Push Pull	Push Pull	Pull
	8 15 20	10 20 24	12 24 30	17 34 40	15 40
	25 30 17	50 50 35	90 80 50	100 110 70	160 280
	140 110 50	260 190 90	400 260 180	850 750 550	6000 1150
	220 150 95	360 250 175	540 340 250	950 470 450	2400 1300
	300 360 125	640 565 340	900 750 650	1750 1700 1400	8000 2500
	12 to 360 Vdc 24 to 400 Vac	12 to 360 Vdc 24 to 400 Vac	12 to 360 Vdc 24 to 400 Vac	12 to 360 Vdc 24 to 400 Vac	12 to 360 Vdc 24 to 400 Vac
	Leads (for DC current only)				

Important: for all orders, please specify: part number-voltage-duty cycle.