



Shotbolts for general use

8.P29



8.02



8.04

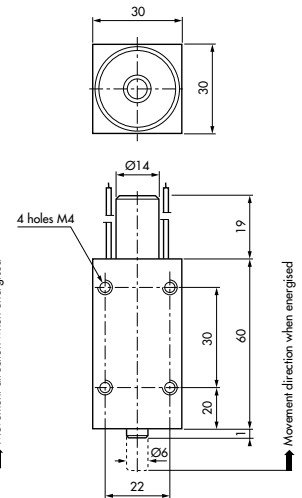
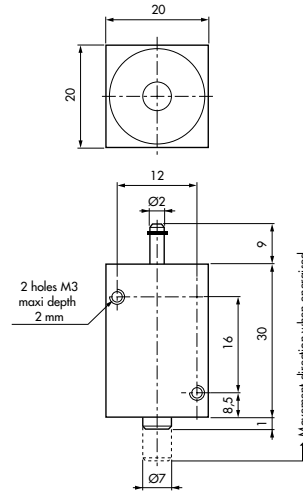
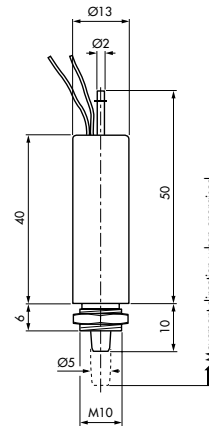
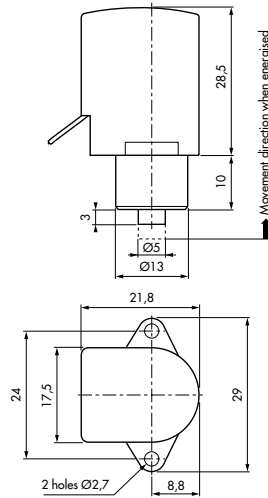


8.10



Shown in energised position

For a more detailed drawing please request the specifications sheet of the product



Part number	8.P29.45	8.02.51.19	8.04.AM.52	8.10.BM.28
Locking mode	Power off	Power off	Power off	Power off
Nominal stroke	3 mm	8 mm	5 mm	11 mm
Shearing strength (daN)	5	5	10	60
Return force (daN)	0,015	0,05	0,03	0,1
Absorbed power (W)	2	17	5,5	9
Duty cycle	100 %	15 %	100 %	100 %
Total cycle time		2 mn		
Standard voltage	24 Vdc	24 Vdc	24 Vdc	24 Vdc
Bolt position monitoring	no	no	no	no
Total weight	30 g	30 g	60 g	350 g
Ambient service temperature	-5°C, +40°C	-5°C, +40°C	-5°C, +40°C	-5°C, +40°C
Applications	Automotive	Automation	Automation	Automation
Protection rating	IP40	IP40	IP40	IP40

Possible variants (please call us to define the part numbers)
Detailed technical specification sheets available on request

Variations	Bolt position monitoring Without cover			
Standard voltage	12 to 48 Vdc	12 to 125 Vdc	12 to 125 Vdc	12 to 205 Vdc 24 to 230 Vac
Connection	Pins connector			connector

Important: for all orders, please specify: part number-voltage-duty cycle.