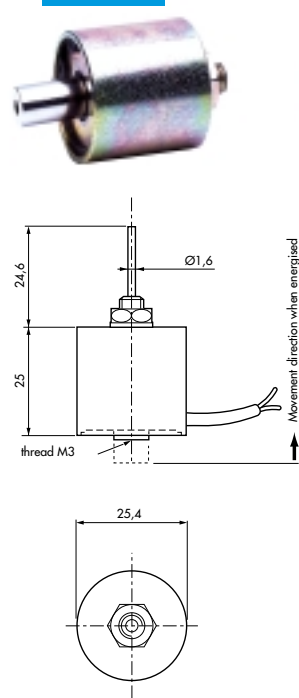
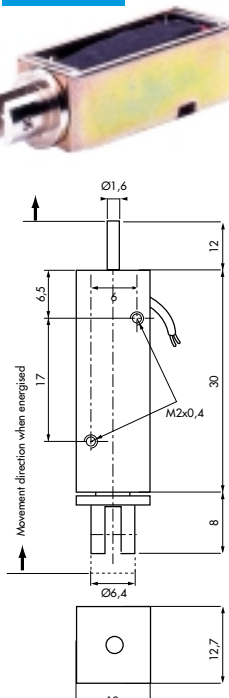




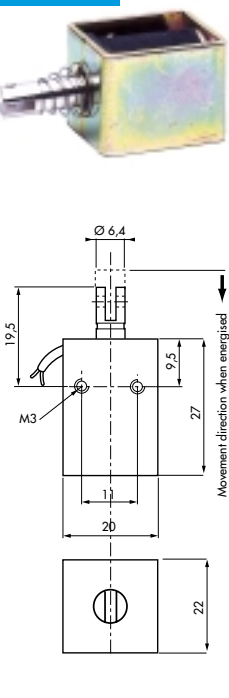
8.MC3



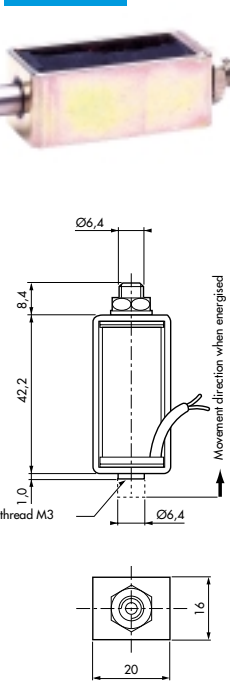
8.M10



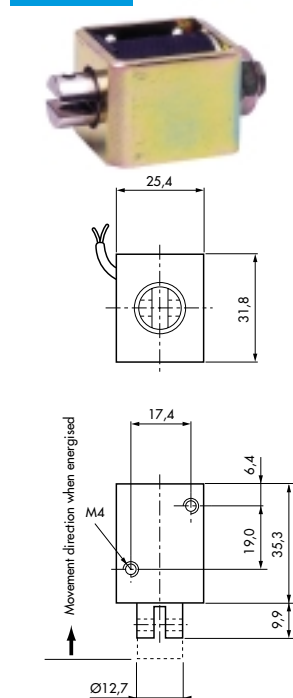
8.M11



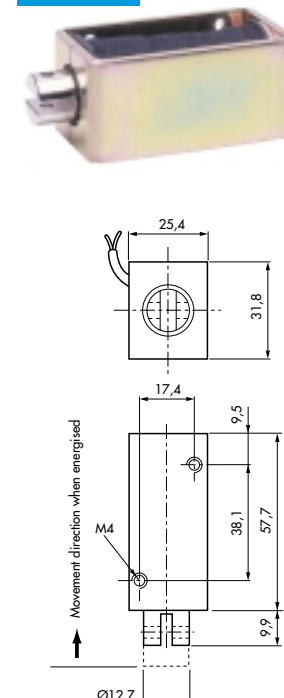
8.M12



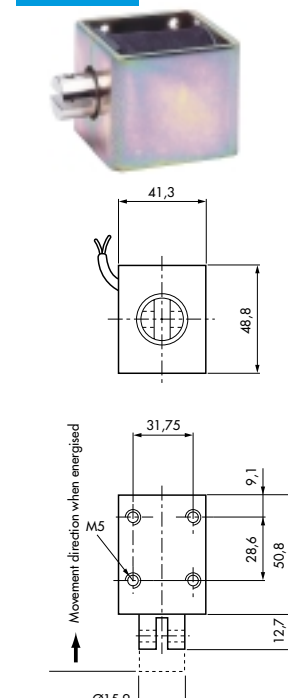
8.M13



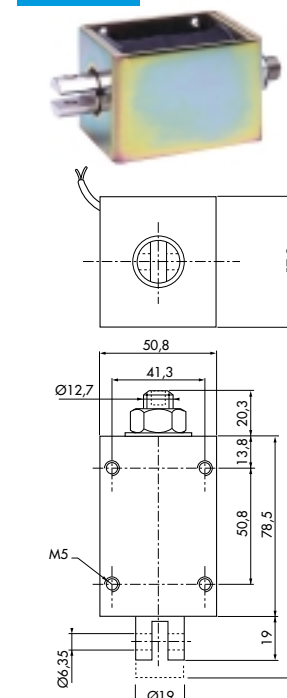
8.M14



8.M15



8.M17



Shown in energised position
For a more detailed drawing please request the specifications sheet of the product

Part number	8.MC3.11.62			8.M10.02.62			8.M11.02.52			8.M12.02.52		
Nominal stroke	4 mm			3 mm			6 mm			9 mm		
Absorbed power (W)	3,5	12,5	54	2	7	31	4	13,5	60	5	18	80
Force at beginning of stroke (N)	0,25	1,8	6,5	0,1	0,3	1,6	0,3	2,2	6,5	0,25	0,75	2,2
Force at end of stroke (N)	4,5	8,2	12	0,6	2	3	5	10	12,5	2,5	4	6
Duty cycle	100 %	25 %	5 %	100 %	25 %	5 %	100 %	25 %	5 %	100 %	25 %	5 %
Total length of cycle	2 mn		2 mn	2 mn		2 mn	2 mn		2 mn	2 mn		2 mn
Standard voltage	24 Vdc			24 Vdc			24 Vdc			24 Vdc		
Type	Push-Pull			Push-Pull			Pull			Pull		
Incorporated return spring	no			no			no			no		
Plunger retainer	no			no			no			no		
Total weight	70 g			20 g			55 g			60 g		
Plunger weight	7 g			4 g			5 g			10 g		
Protection rating	IP00			IP00			IP00			IP00		

Possible variants (please call us to define the part numbers)
Detailed technical specification sheets available on request

	Pull	Pull	Push with spring	Push
Stroke (mm)				
Duty cycle 100%				
Force at beginning of stroke (N)				
Force at end of stroke (N)				
Duty cycle 5%				
Force at beginning of stroke (N)				
Force at end of stroke (N)				
Supply voltage	6 to 24 Vdc	6 to 24 Vdc	6 to 48 Vdc	6 to 110 Vdc
Connection				

Important: for all orders, please specify: part number-voltage-duty cycle.

Part number	8.M13.02.52			8.M14.02.52			8.M15.02.52			8.M17.02.52		
Nominal stroke	9 mm			12 mm			15 mm			18 mm		
Absorbed power (W)	6,5	23	102	10,5	38	169	15	53,5	237	19	70	307
Force at beginning of stroke (N)	1	3	12	2	5	17	1	7,5	27	5	15	60
Force at end of stroke (N)	4	10	40	8	18	30	15	60	60	40	90	140
Duty cycle	100%	25%	5%	100%	25%	5%	100%	25%	5%	100%	25%	5%
Total length of cycle	2 mn		2 mn	2 mn		2 mn	2 mn		2 mn	2 mn		2 mn
Standard voltage	24 Vdc			24 Vdc			24 Vdc			24 Vdc		
Type	Pull			Pull			Pull			Pull		
Incorporated return spring	option on pull only			option on pull only			option on pull only			no		
Plunger retainer	no			no			no			no		
Total weight	160 g			250 g			570 g			1100 g		
Plunger weight	35 g			65 g			85 g			145 g		
Protection rating	IP00			IP00			IP00			IP00		

Possible variants (please call us to define the part numbers)
Detailed technical specification sheets available on request

	Push Push-Pull	Push Push-Pull	Push Push-Pull	Push Push-Pull
Stroke (mm)	12 mm	15 mm	18 mm	21 mm
Duty cycle 100%	1	2	4	5
Force at beginning of stroke (N)	3	6	11	25
Duty cycle 5%	13	24	31	65
Force at beginning of stroke (N)	25	30	51	90
Supply voltage	6 to 240 Vdc 6 to 250 Vac	6 to 240 Vdc 6 to 250 Vac	6 to 250 Vdc 6 to 250 Vac	6 to 250 Vdc
Connection				

Important: for all orders, please specify: part number-voltage-duty cycle.